

# Putnam Public Service District

Post Office Box 860 • Scott Depot, West Virginia 25560-0860  
Phone: (304) 757-6551 • Fax: (304) 757-6558



## ATTENTION

### GRINDER PUMP STATION CUSTOMERS

Do not place any liquids, paper or waste of any kind into the sanitary sewer of your home or business until the grinder pump station has been put into service by Putnam Public Service District employees. In the event that waste has been discharged into the grinder pump prior to it being placed into service, any and all cleaning, pumping, sanitizing, or damage caused to the unit will be at the expense of the property owner and or applicant, and will be completed before the District can put the grinder pump station into operation.

Acknowledged by:

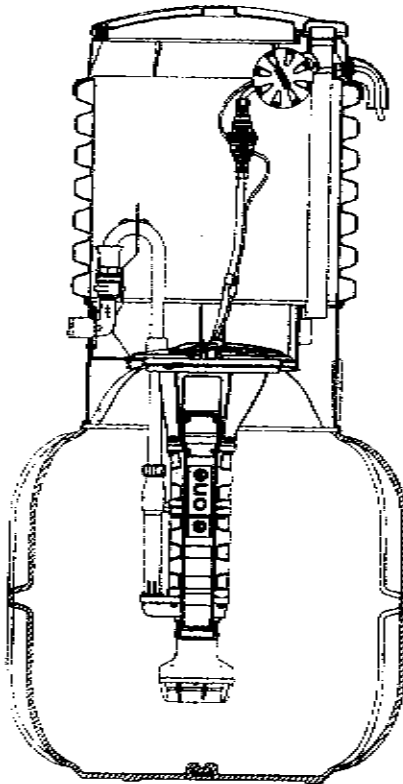
Print: \_\_\_\_\_

Sign: \_\_\_\_\_

Date: \_\_\_\_\_

# E/ONE EXTREME SERIES

## DH151/DR151



### General Features

The DH151 or DR151 grinder pump station is a complete unit that includes: the grinder pump, check valve, HDPE (high density polyethylene) tank and controls. The DH151 or DR151 is packaged into a single complete unit, ready for installation.

The DH151 is the "hardwired," or "wired," model where a cable connects the motor controls to the level controls through watertight penetrations.

The DR151 is the "radio frequency identification" (RFID), or "wireless," model that uses wireless technology to communicate between the level controls and the motor controls.

All solids are ground into fine particles, allowing them to pass easily through the pump, check valve and small-diameter pipelines. Even objects not normally found in sewage, such as plastic, rubber, fiber, wood, etc., are ground into fine particles.

The 1 1/4-inch discharge connection is adaptable to any piping materials, thereby allowing us to meet local code requirements.

The tank is made of tough corrosion-resistant HDPE. The optimum tank capacity of 150 gallons is based on computer studies of water usage patterns. A single DH151 or DR151 is ideal for up to two average, single-family homes and can also be used for up to six average single-family homes where codes allow and with the consent of the factory. This model can accommodate flows of 1500 GPD.

The internal check valve assembly, located in the grinder pump, is custom-designed for non-clog, trouble-free operation.

The grinder pump is automatically activated and runs infrequently for very short periods. The annual energy consumption is typically that of a 40-watt light bulb.

Units are available for indoor and outdoor installations. Outdoor units are designed to accommodate a wide range of burial depths.

### Operation Information

#### Motor

1 hp, 1,725 rpm, high torque, capacitor start, thermally protected, 120/240V, 60 Hz, 1 phase

#### Inlet Connections

4-inch inlet grommet standard for DWV pipe. Other inlet configurations available from the factory.

#### Discharge Connections

Pump discharge terminates in 1 1/4-inch NPT female thread. Can easily be adapted to 1 1/4-inch PVC pipe or any other material required by local codes.

#### Discharge\*

15 gpm at 0 psig

11 gpm at 40 psig

7.8 gpm at 80 psig

### Overload Capacity

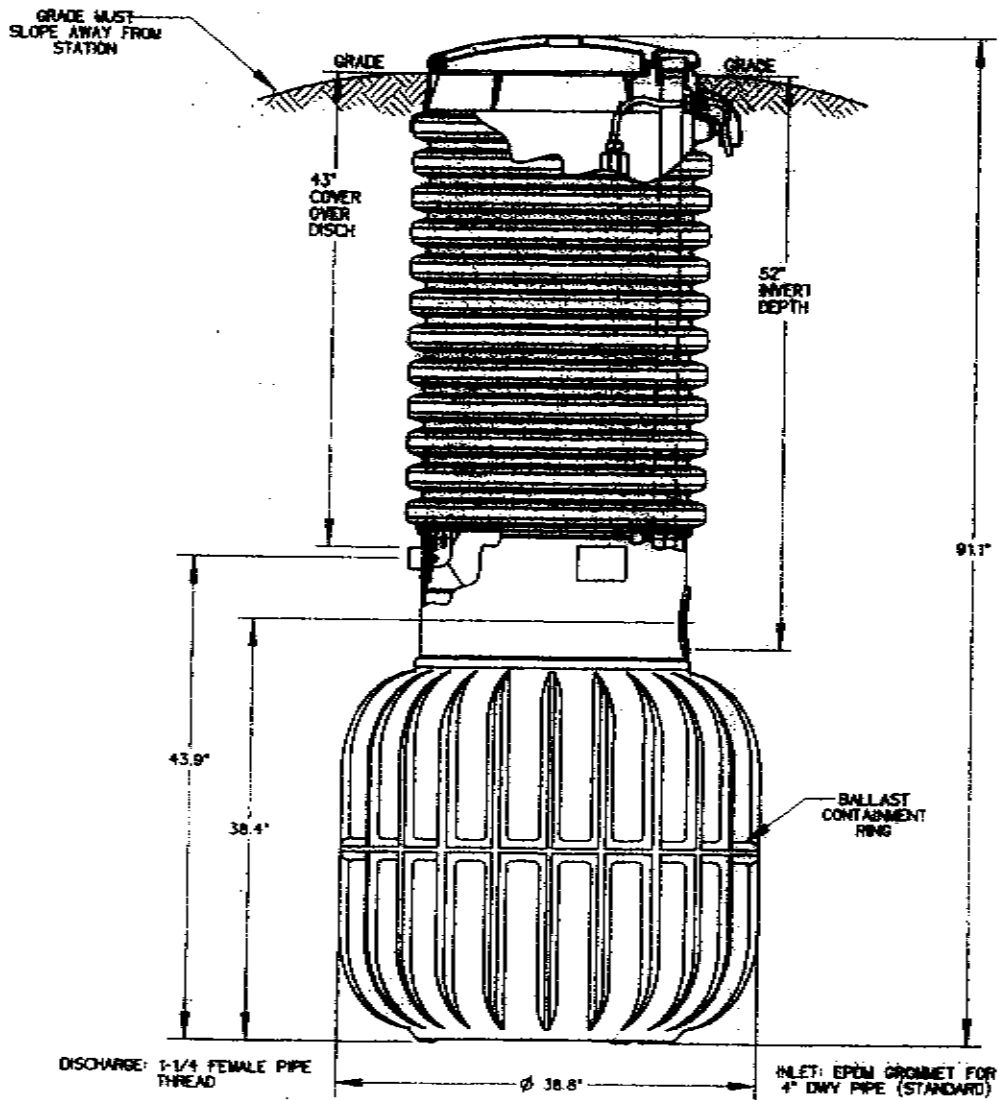
The maximum pressure that the pump can generate is limited by the motor characteristics. The motor generates a pressure well below the rating of the piping and appurtenances. The automatic reset feature does not require manual operation following overload.

Patent Numbers: 5,752,315  
5,562,254 5,439,180

\* Discharge data includes loss through check valve, which is minimal.

NA0051P01

OPTIONS :  **DH151-93** (HARD WIRED LEVEL CONTROLS)  
 **DR151-93** (WIRELESS LEVEL CONTROLS)



CONCRETE BALLAST MAY BE REQUIRED  
 SEE INSTALLATION INSTRUCTIONS  
 FOR DETAILS



AD	CAH	7/13/07	B	1/16
DR BY	CHK'D	DATE	ISSUE	SCALE
MODEL DH151-93 / DR151-93				
NA0051P06				

# **E/ONE**

---

# **EXTREME**

S E R I E S

---

## **E/One Sentry™**

### **Alarm Panel — Basic Package**

#### **Description**

The E/One Sentry panels are custom designed for use with Environment One grinder pump stations. They can be configured to meet the needs of your application, from basic alarm indication to advanced warning of pending service requirements.

E/One Sentry panels are supplied with audible and visual high level alarms. They are easily installed in accordance with relevant national and local codes. Standard panels are approved by UL, CSA, CE and NSF to ensure high quality and safety.

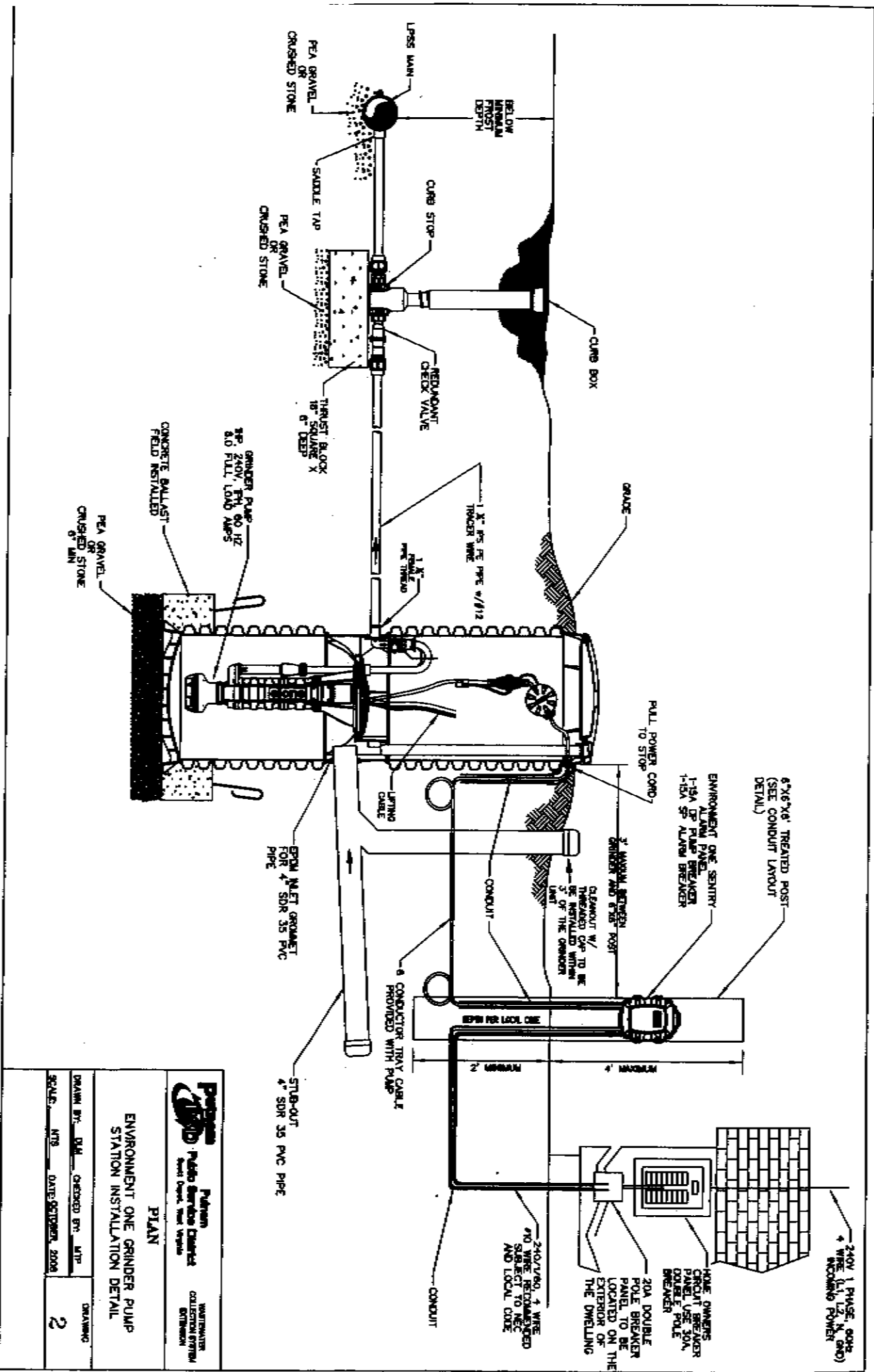
The panel features a corrosion-proof, NEMA 4X-rated, thermoplastic enclosure. A padlock is provided to prevent unauthorized entry (safety front).



#### **Features**

- Circuit breakers, 240 or 120 VAC service
- Terminal blocks and ground lugs
- Audible alarm with manual silence
- Manual run feature and run indicator
- Redundant "Start" function with high level alarm
- Safety front — authorized personnel only when locked
- Conformal-coated alarm board (both sides)
- Alarm board overload protection

Please consult factory for special applications.

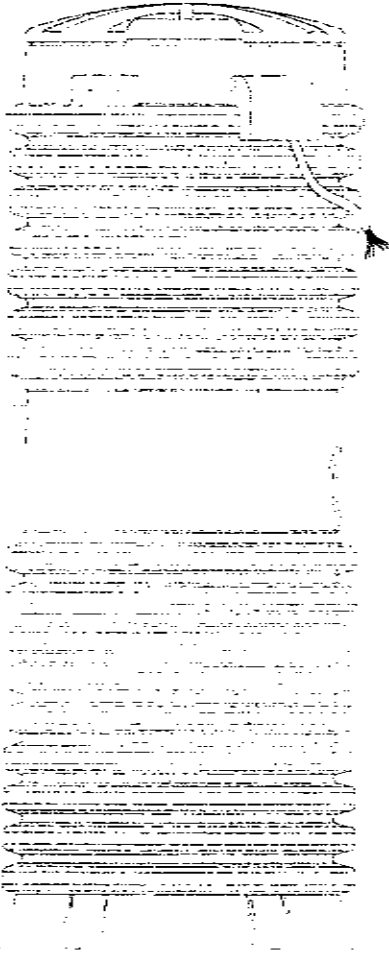


		<b>Pulsar</b> Pulsar Services Company 4000 West 10th Street, Suite 100 Denver, CO 80202	MAINTENANCE COLLECTION SYSTEM DIVISION
<b>PLAN</b>			
<b>ENVIRONMENT ONE GRINDER PUMP STATION INSTALLATION DETAIL</b>			
DRAWN BY: <b>DJM</b> SCALE: <b>NTR</b> DATE: <b>SEPTEMBER 2008</b>	CHECKED BY: <b>MTP</b> DATE: <b>SEPTEMBER 2008</b>	DRAWING NO: <b>2</b>	

E/One Sewers™

## Limited Warranty

For E/One Extreme D-Series,  
W-Series & Upgrade



Environment One Corporation offers a limited warranty that guarantees its product to be free from defects in material and factory workmanship for a period of two years from the date of installation, or 27 months from the date of shipment, whichever occurs first, provided the product is properly installed, serviced and operated under normal conditions and according to manufacturer's instructions. Repair or parts replacement required as a result of such defect will be made free of charge during this period upon return of the defective parts or equipment to the manufacturer or its nearest authorized service center.

Model Number: \_\_\_\_\_

Serial Number: \_\_\_\_\_

Installation Date: \_\_\_\_\_



SEWER SYSTEMS

2773 Balltown Rd • Niskayuna NY USA 12309  
(01) 518.346.6161 • www.eone.com

TROMBOLD EQUIPMENT CO., INC.

P.O. Box 897

310 Clay Avenue

Mars, PA 16046

(Fax) 724/625-4227 • (Ph) 724/625-4260

# USER INSTRUCTIONS FOR GRINDER PUMP

## GENERAL INFORMATION

The basic unit in this system is an Environment I One Grinder Pump. The tank collects all effluent from the house, and the solid materials are then ground to a small size suitable for pumping as a slurry with the effluent water.

## USE & CARE OF YOUR GRINDER PUMP

- The following items, although capable of being ground and pumped by the unit, **should not** be introduced into the sewers either directly, or through a kitchen food waste disposal unit:
- Glass
- Egg Shells
- Metal
- Seafood Shells
- Diapers, socks, rags or cloth
- Cigarette butts
- Plastic objects (toys, utensils, etc.)
- Sanitary napkins or tampons
- Fish tank rocks
- Cat litter
- Excessive household cooking grease

In addition, you must **never** introduce into your sewer:

- Explosives
- Flammable material
- Lubricating oil & greases
- Strong chemicals
- Gasoline
- Paint

If Putnam PSD finds a failure in the grinder pump, due to customer neglect, the customer could be held responsible for the cost of the repairs to the grinder pump.

## POWER FAILURE

If electrical power service is interrupted, water usage must be kept to a minimum. Your Grinder Pump cannot dispose of wastewater without electrical power and usage must be limited to the reserve capacity of the tank.

## PUMP FAILURE ALARM LIGHT (HIGH WATER LEVEL)

In the event that a failure should occur, the red alarm light will turn on. If the red light stays lit for half a minute or longer, there is a problem and you should contact:

Putnam PSD

M-F 8:00 am – 4:30 pm 757-6551

After 5:00 pm call 757-6509

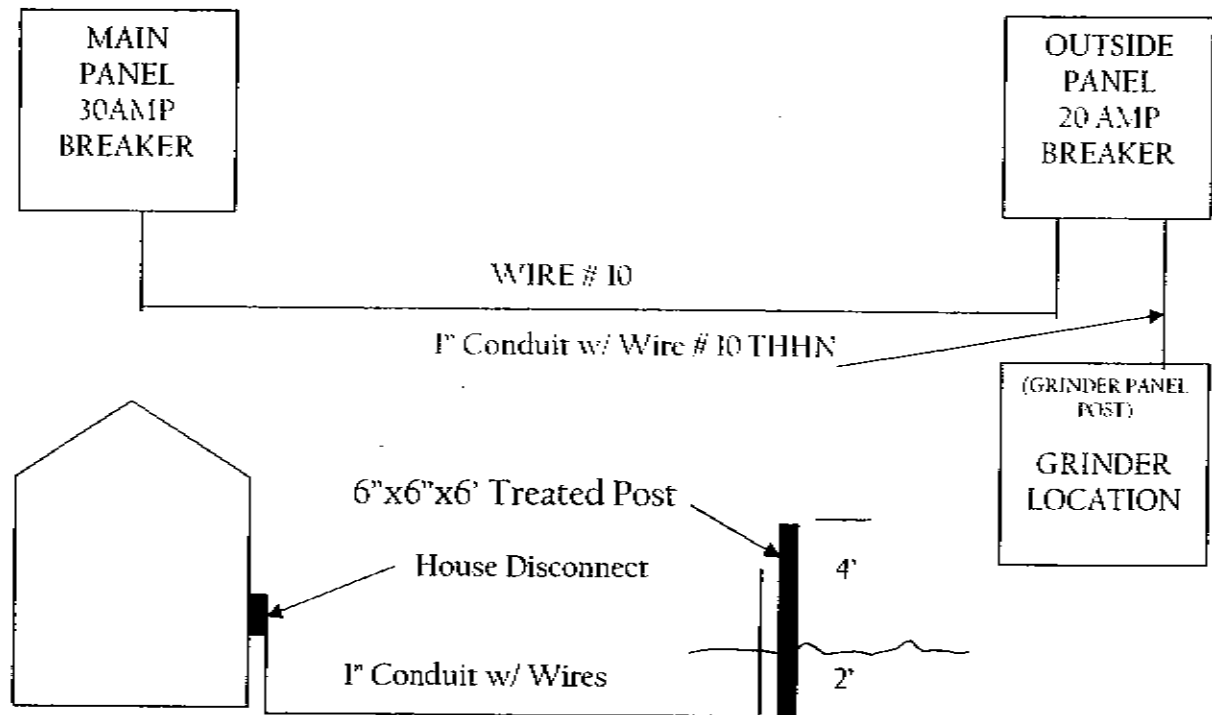
# PUTNAM PUBLIC SERVICE DISTRICT

Post Office Box 860  
Scott Depot, West Virginia 25560-0860  
304-757-6551 / Fax: 304-757-6558

## CONDUIT LAYOUT

Install circuit run from main house panel to a Weather Proof Disconnect on outside of house; disconnect breaker shall be 20 AMP Double Pole; breaker in main house panel shall be 30 AMP Double Pole; and wire from house disconnect to control panel shall be #10/THHN, 4- Individual wires - black, red, white and green.

Install conduit run from outside disconnect to grinder control panel post; conduit to be 1" PVC, additional installation by the customer shall include a 6" x 6" x 6' treated square post with a minimum of 48" above surface for the control panel. The control panel supplied with E-One Pump will be installed and connected to customer wiring by Putnam PSD.

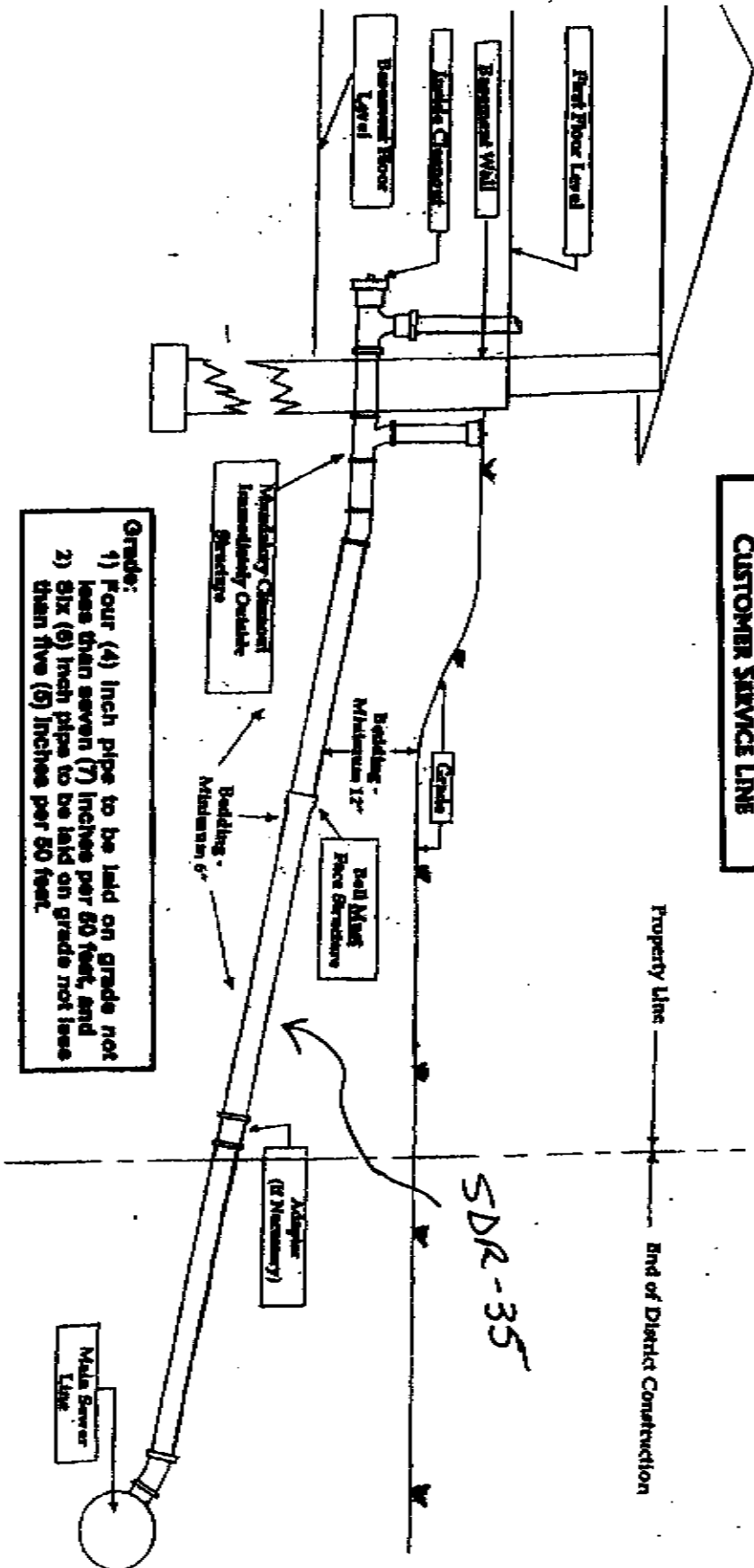


### MANUFACTURED HOMES [SINGLE & DOUBLEWIDE]

Where the customer has an outside main disconnect with extra space for an additional Double Pole Breaker, they may use this space rather than going to the main panel inside. In this space they should use a 20 AMP Double Pole breaker; otherwise, the installation shall be the same as outlined above.

**CUSTOMER'S SERVICE LINE TO BE INSPECTED AND APPROVED BY THE DISTRICT OR ITS DESIGNATED REPRESENTATIVE BEFORE ANY BACKFILLING IS BEGUN AND THE LINE PLACED IN SERVICE.**

**DIAGRAM**  
Putnam Public Service District  
CUSTOMER SERVICE LINE



**Grade:**  
 1) Four (4) inch pipe to be laid on grade not less than seven (7) inches per 50 feet, and  
 2) Six (6) inch pipe to be laid on grade not less than five (5) inches per 50 feet.

Property Line ----- End of District Construction

*SDR-35*

Main Service Line